



Foxglove Cottage, Folds Head, Calver, Hope Valley, S32 3XJ

Foxglove Cottage, Folds Head

Calver, Hope Valley, S32 3XJ

A delightful stone built link-detached one bedroomed cottage, dated 1810, beautifully positioned in the heart of Old Calver with patio seating area and lovely views across historic main street. With accommodation arranged over three floors, this unique home has a wealth of charming features including stone-built fireplace with multi fuel stove, double height ceiling and mezzanine level. Foxglove cottage has been a very successful holiday cottage and also well suited as a fulltime residence or second home.

The front door opens to a kitchen area with stone flagged flooring and a range of panelled units incorporating stainless steel sink and drainer, four burner electric hob and integral oven. There is space for undercounter fridge and washing machine.

An opening leads to the sitting room with double height ceiling, exposed beams and window with window seat overlooking the village with views towards Curbar Edge. There is space for dining table and chairs, a seating area and the focal point of the room is provided by a stone-built fireplace and multi fuel stove. An open tread staircase leads to a lovely mezzanine area, perfect as a quiet reading area or storage space.

From the sitting room, stairs lead down to a ground floor bedroom with front facing window and door opening to Folds Head. The adjoining shower room features, low flush WC, pedestal washbasin and shower enclosure with chrome attachments.

Outside, to the front of the property is a patio terrace overlooking Folds Head and the heart of Old Calver. The cottage benefits from UPVC double glazed windows and doors and there is ample on street parking in the village. The property is ideally located, close to Chatsworth House, Haddon Hall, the historic market town of Bakewell, Eyam village and other Peak District attractions.

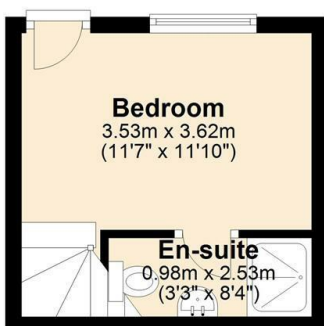
- Charming link-detached cottage in the heart of Old Calver
- Sitting room double height ceiling
- Stone built fireplace with stove
- Kitchen
- Mezzanine area
- Double bedroom
- Shower room
- Excellent location and village views
- Great holiday LET potential - no chain
- Tenure: Freehold, Council Tax Band B





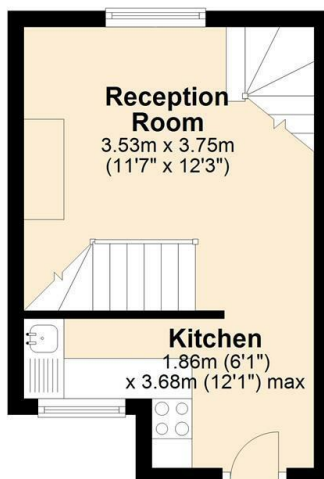
Ground Floor

Approx. 12.8 sq. metres (137.5 sq. feet)



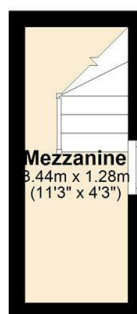
First Floor

Approx. 18.5 sq. metres (198.9 sq. feet)

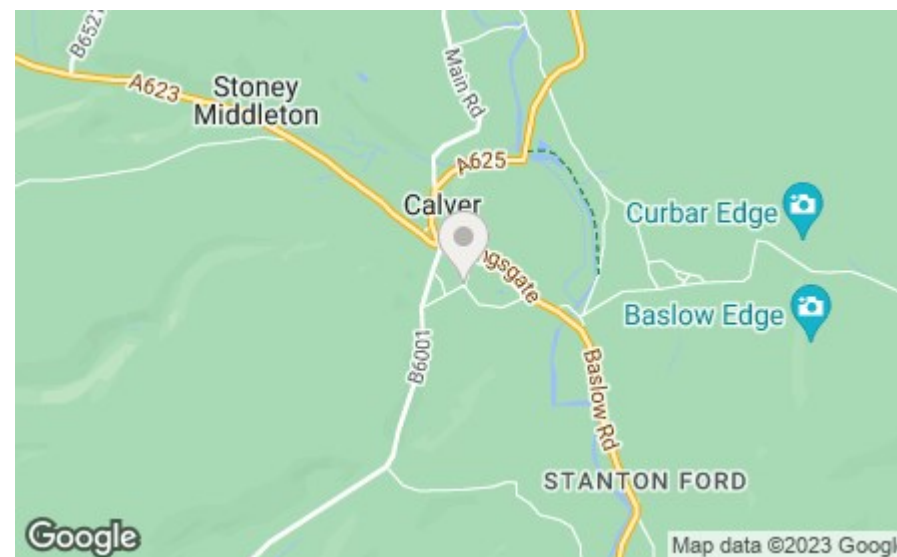


Second Floor

Approx. 4.4 sq. metres (47.5 sq. feet)



Total area: approx. 35.7 sq. metres (383.9 sq. feet)



Bakewell

3 Royal Oak Place
Matlock Street
Bakewell DE45 1HD
T: 01629 700699
E: bakewell@elr.co.uk

Banner Cross

888 Ecclesall Road
Banner Cross
Sheffield S11 8TP
T: 01142 683388
E: bannercross@elr.co.uk

Dore

33 Townhead Road
Sheffield
S17 3GD
T: 0114 2362420
E: dore@elr.co.uk

Hathersage

Main Road, Hathersage
Hope Valley
Derbyshire S32 1BB
T: 01433 651888
E: peakdistrict@elr.co.uk

Rotherham

149 Bawtry Road
Wickersley
Rotherham S66 2BW
T: 01709 917676
E: wickersley@elr.co.uk

**EADON
LOCKWOOD
& RIDDLE**
ESTD 1840